

BLUEMARINE ECHOSOUNDER BATHIMETRY

Precision and Depth in Underwater Mapping

The Bluemarine Echosounder Bathymetry is a state-of-the-art sonar system designed for high-precision underwater mapping and depth measurement. Engineered for use in a variety of marine and freshwater environments, the Bluemarine Echosounder provides accurate and reliable data for applications ranging from navigation and environmental monitoring to hydrographic surveys and underwater construction.

Key Features

High-Resolution Depth Measurement

The Bluemarine Echosounder delivers precise depth readings with exceptional accuracy, allowing for detailed mapping of underwater topography and seabed features.

Advanced Sonar Technology

Utilizing cutting-edge sonar technology, this echosounder provides clear, reliable, and consistent data, even in challenging conditions such as murky water or strong currents.

User-Friendly Interface

Equipped with an intuitive interface, the Bluemarine Echosounder simplifies setup and operation, enabling users to easily configure settings and access real-time data.

Durable and Reliable Design

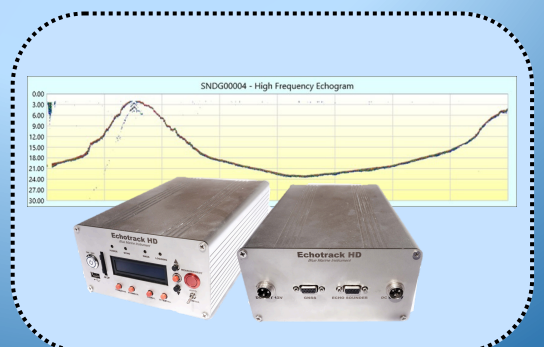
Built to withstand harsh marine environments, the echosounder is rugged and waterproof, ensuring dependable performance and longevity in a variety of conditions.

Real-Time Data Collection

Capture and view bathymetric data in real time, allowing for immediate analysis and decision-making during surveys and mapping operations.

Versatile Applications

Ideal for hydrographic surveys, navigation charting, underwater inspections, and environmental studies, the Bluemarine Echosounder meets the needs of a wide range of maritime and freshwater projects.



Technical Specification

| | | |
|---|--------------------------|---|
| Tranducer Bluemarin | Sensor | Single Beam Echo Sounder |
| | Beam Angle | 9° |
| | Frequency Band | 200 kHz |
| | Minimum Depth | 0.4 meter |
| | Maximum Depth | 200 meter |
| | Depth Accuracy | 99.46 % |
| | Interval Output | 0.1 to 25 Second / Interval |
| Data | Sensor | Tranducer, Compass, Gyroscope, IMU, GNSS |
| | Depth Display Resolution | 0.01 meter |
| | Data Output | Depth, Temperature, Coordinate, Time |
| | NMEA 0183 Baudrate | 4800 |
| Connectivity and Indicator | Data Format | RAW Data (.bmi format) |
| | Connectivity | USB 3.0, RS232, SD Card, |
| | Indicator | Indicator Transmitter GNSS Data Indicator Transmitter Data Echosounder Indicator Logging (Record Data) Indicator Power |
| Power | Input Voltage | 9 to 16 VDC (Up to 10.000 mAh) |
| Software | Software | Echogram Bluemarine |
| | Display | Depth Data Coordinate Data Temperature Data Echogram Data Time Accusition |
| GNSS Support | TGS Series | GNSS Geodetic Dual Frequency |
| Size Unit | Dimensions | 250mm x 165mm x 85mm |
| | Weight | 1420 gram |
| TKDN (Tingkat Komponen Dalam Negeri) Certificate | | 38 % |



Pamularsih Street, No. 152B, Sinduharjo,
Ngaglik, Sleman, Special Region of
Yogyakarta 55581, Indonesia



info@technogis.co.id



www.technogis.co.id



technogis.idn



PT Techno GIS Indonesia



+62 813-2552-3979



(0274)885879