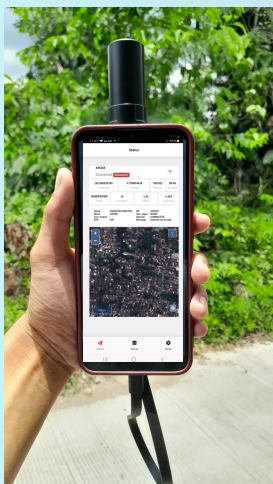


TGS GNSS N2 RTK PRO

Advanced GNSS RTK with Real-Time
Mobile Connectivity

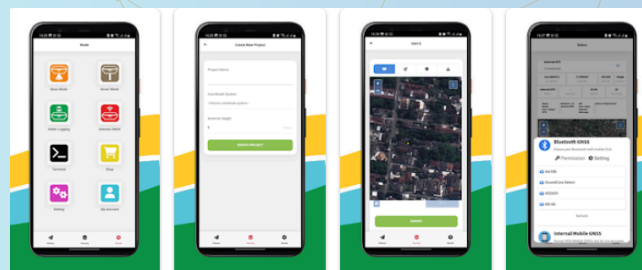


The TGS GNSS SERIES as professional-grade GNSS positioning capabilities. Specifically, it features high-precision RTK technology and industrial-grade durability especially suitable for surveying and mapping, railway inspection and maintenance, pipeline inspection and monitoring, forest resource management, agricultural land use planning, transportation & Logistics and other industries.

Integrated with GIS Survey Mobile App

The TGS GNSS SERIES pairs seamlessly with the GIS Survey Mobile app, offering advanced functionality and real-time control from your mobile device:

- **Remote Configuration:** Adjust device settings, start and stop surveys, and monitor real-time data collection directly from the app.
- **Live Data Sync:** View and save geospatial data on the go, with immediate synchronization to your GIS system for further analysis and processing.
- **Streamlined Workflows:** Manage multiple projects, export data in various formats, and integrate with GIS platforms for faster decision-making and reporting.



Pamularsih Street, No. 152B, Sinduharjo,
Ngaglik, Sleman, Special Region of
Yogyakarta 55581, Indonesia



info@technogis.co.id



www.technogis.co.id



+62 813-2552-3979



(0274)885879



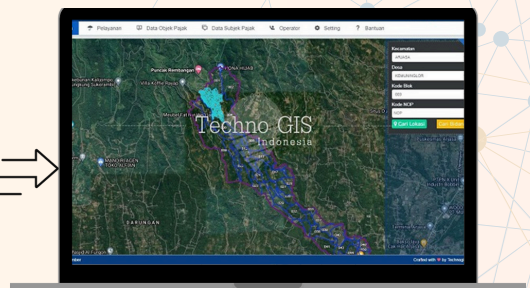
PT Techno GIS Indonesia



technogis.idn

Technical Specification

System	Receiver Type	Multi-band GNSS high precision receiver
GNSS	GNSS Channel	Multiband GNSS High Precision, GPS L1C/A L2C, GLO L1OF L2OF, GAL E1B/C E5b, BDS B1I, QZSS L1C/A L2C
External Ports	Device Support	Android Smartphone
	Interface	Bluetooth; Wifi
	Power Supply	Battery:7,4 V (Life: 10-12 hours)
	Data Update GNSS Position Result	5Hz
	Cold Start	<30 s
	Hot Start	<5s
Communication	Bluetooth	BT 5.1
	Wifi	802.11 (Dual Band 2.4 & 5GHz)
	Mobile Network Support	TDD-LTE / FDD-LTE / WCDMA / HSPA+GSM / EDGE
	Data cabel	USB Micro
Indicator	Led Indicator	Battery, Signal, Status, Data Record
	Buzzer	Data Record
	Bar Battery Power External	Power status
Positioning Performance	Accuracy Single Point	Horizontal : < 1.0m ; Vertical : <2.0m
	Accuracy RTK	RTK : Horizontal : < 1.0 cm + ppm; Vertical : <1.5 cm + ppm
	Single Point	<ul style="list-style-type: none"> Horizontal Positioning Accuracy 1.5 m +1 ppm (RMS) Vertical Positioning Accuracy 2.5 m +1 ppm (RMS)
	RTK Initialization	<5s
	Timming Accuracy	20ns (RMS)
Power External	Battery	3.8V, 8200mAh, replaceable
	Operating Time	Survey Mode Up to 12 Hours
	Charger	2 Ampere
Physical	Dimension (W x H)	Diameter 65 mm x 43 mm x 20mm
	Weight	10 gram
TKDN (Tingkat Komponen Dalam Negeri) Certificate		38 %



GIS Survey Mobile

TGS N2 Dashboard

