

GeoLiDAR Handheld Slam



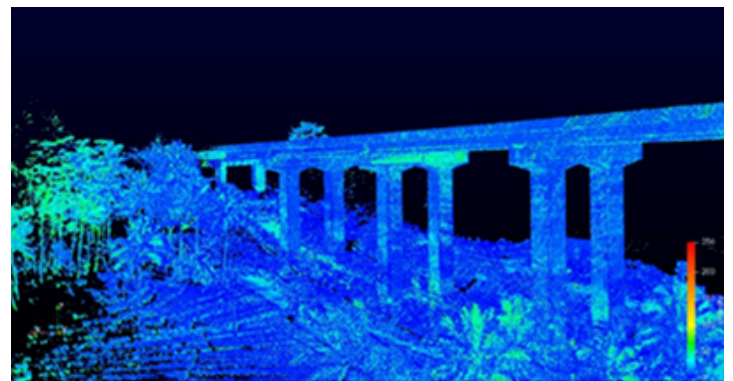
For More Accurate Terrestrial 3D Mapping

Fast and Flexible Oblique Laser Scanning Across Various Terrains

Data Easily Integrated with GIS Systems

GeoLiDAR Supports Various Engineering and Survey Applications

TKDN Certification Supports Local Industries and Ensures Quality



System Parameter

Point Cloud Accuracy	5cm@100m without control point
Weight	1.7kg(without battery)
Battery Parameter	4.2V 3400mAh
Storage	Build-in Flash memory 64GB, Support microSD 500GB.
Voltage Range	12V-18V
Dimension	15.3*9.3*39.4cm
Working Temperature	-20°C-55°C
Carrying Platform	Hand-held, Multi-rotor and Vehicle
System Consumption	25W

POS Unit

Model	GeoLiDAR SLAM
Update Frequency	200Hz
GNSS Signal Type	GPS L1/L2/L5, GLONASS L1/L2 BDS B1C/B1/B2/B2a/B2b/B3 GALELEO E1/E5b/E5a
Position Accuracy	Horizontal 0.02m Elevation 0.03m
Pitch Accuracy	0.025°
Roll Accuracy	0.025°
Heading Accuracy	0.080°
Produk	Support RTK

Laser Unit

Detection Range	80m@10%,Max Range 120m
Range Accuracy	±1.5cm
Channel	16
Horizontal FOV	360°
Vertical FOV	270°
Point Rates	Single echo 320,000 Points/Sec, Dual echo 640,000 Points/Sec.

Camera Parameter

Resolution	3*5 MP
FOV	Horizontal 270°
Shooting Mode	Isochronous